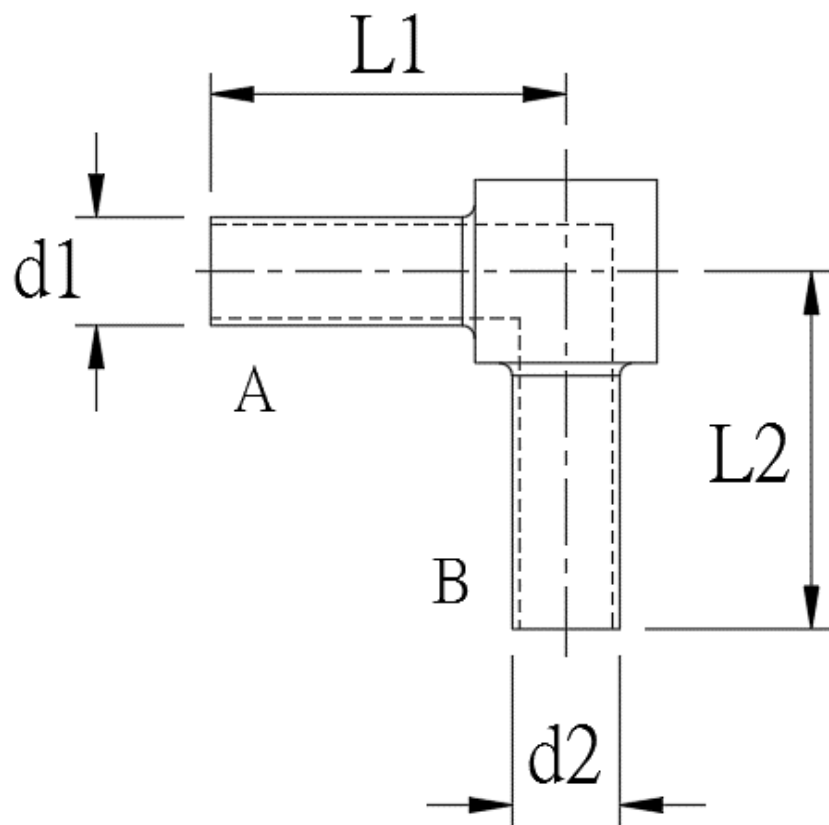


彎頭 / ELBOW



品名 Name	彎頭 / ELBOW					
材質 Material	PTFE					
產品編號 Part No.	A	B	d1	d2	L1	L2
	Tube Size					
UE - 20(S) - 20(S)	1 1/4"	1 1/4"	31.8	31.8	122	122
UE - 16(S) - 16(S)	1"	1"	25.4	25.4	80	80
UE - 12(S) - 12(S)	3/4"	3/4"	19	19	50	50
UE - 8(S) - 8(S)	1/2"	1/2"	12.7	12.7	48	48
UE - 6(S) - 6(S)	3/8"	3/8"	9.5	9.5	45	45
UE - 4(S) - 4(S)	1/4"	1/4"	6.5	6.5	38	38
UE - 20(S) - 16(S)	1 1/4"	1"	31.8	25.4	122	97
UE - 20(S) - 12(S)	1 1/4"	3/4"	31.8	19	122	64
UE - 20(S) - 8(S)	1 1/4"	1/2"	31.8	12.7	122	63
UE - 20(S) - 6(S)	1 1/4"	3/8"	31.8	9.5	122	63
UE - 20(S) - 4(S)	1 1/4"	1/4"	31.8	6.35	122	57
UE - 16(S) - 12(S)	1"	3/4"	25.4	19	80	59
UE - 16(S) - 8(S)	1"	1/2"	25.4	12.7	80	61
UE - 16(S) - 6(S)	1"	3/8"	25.4	9.5	80	60
UE - 16(S) - 4(S)	1"	1/4"	25.4	6.35	80	55
UE - 12(S) - 8(S)	3/4"	1/2"	19	12.7	50	54
UE - 12(S) - 6(S)	3/4"	3/8"	19	9.5	50	55
UE - 12(S) - 4(S)	3/4"	1/4"	19	6.35	50	50
UE - 8(S) - 6(S)	1/2"	3/8"	12.7	9.5	48	49
UE - 8(S) - 4(S)	1/2"	1/4"	12.7	6.35	48	45
UE - 6(S) - 4(S)	3/8"	1/4"	9.5	6.35	45	41

單位: mm